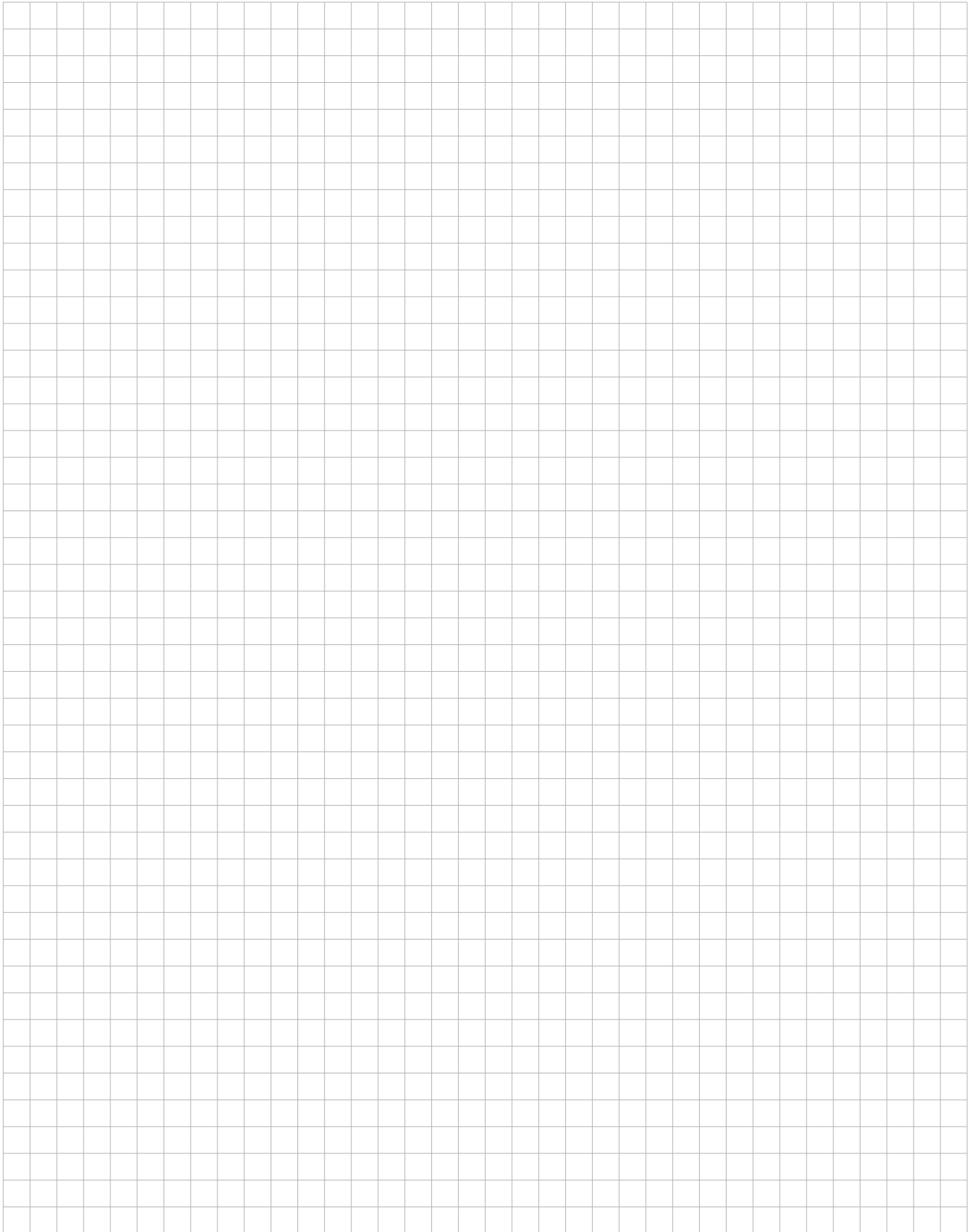


# End Cover







## ■ End Cover

### ■ General Description

End covers are components to be fitted in the housing bores where no input/output shaft is located and to plug and seal service bores. Standard end covers are manufactured in accordance with bore tolerances recommended by DIN 3760 and ISO 6194/1 for Radial Oil Seals.

Two different types of end covers are available as described in the following chapters. The type YJ38 is fully rubber covered and the type YJ39 has a "half-half" design.

### ■ Type YJ 38

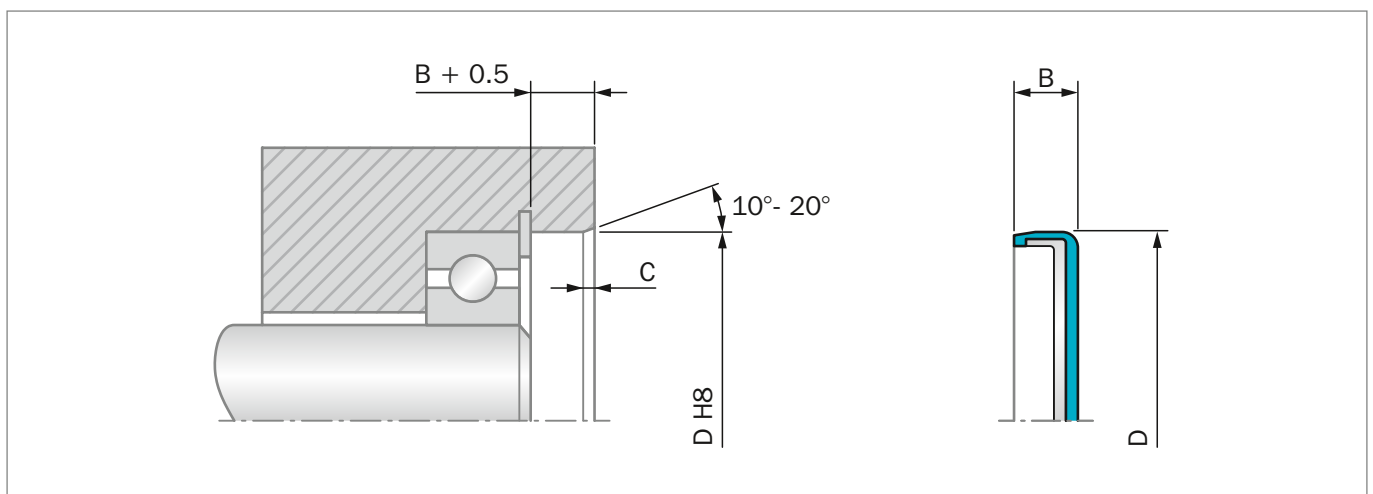


Figure 67: Installation Drawing

### ADVANTAGES

- Good static sealing
- Compensation of different thermal expansion
- No risk of fretting corrosion
- Effective protection against air side contaminants
- Higher bore surface roughness is allowed
- Mounting in split-housings

### APPLICATION EXAMPLES

- Transmission systems (e.g. gearboxes)
- Machine tool



### OPERATING CONDITIONS

<b>Pressure:</b>	Up to 0.05 MPa
<b>Temperature:</b>	-40 °C to +200 °C depending on material
<b>Media:</b>	Mineral and synthetic lubricants (CLP, HLP, APGL etc.)

Trelleborg Sealing Solutions has carried out several thousands compatibility tests. Please ask for details.

### IMPORTANT NOTE

The above data are maximum values and cannot be used at the same time, e.g. the maximum operating speed depends on material type, pressure and temperature.

**Table 43: Materials**

Standard Material*	TSS Material Code	Standard Metal Insert**
NBR (70 Shore A)	N7MMN	Carbon steel
NBR (75 Shore A)	4N01	Carbon steel
FKM (75 Shore A)	VCBV	Carbon steel
FKM (75 Shore A)	4V01	Carbon steel

\* Special grades and other materials (ACM, EACM, EPDM, HNBR, VMQ) on request.

\*\* Metal insert can also be supplied in different materials on request

### ORDERING EXAMPLE END COVER TSS TYPE

<b>TSS Type:</b>	YJ
<b>Code:</b>	YJ38
<b>Dimensions:</b>	Housing diameter 50 mm Width 10 mm
<b>Material:</b>	NBR
<b>Material Code:</b>	N7MMN

Trelleborg Sealing Solutions has carried out several thousand compatibility tests. Please ask your local Trelleborg Sealing Solutions marketing company for details.

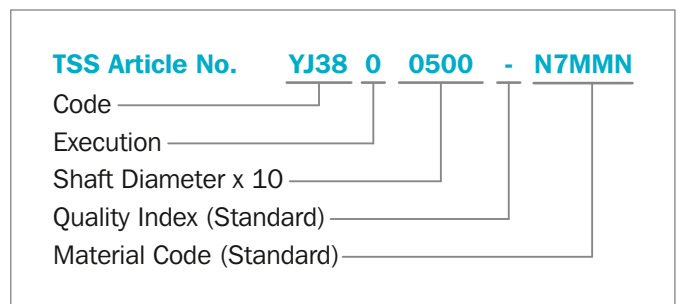




Table 44: Preferred Series/ Dimension, TSS Part Numbers

Bore D H8	Width B	Chamfer C	TSS Part No.	TSS	
				NBR	FKM
10	4	1.0	YJ3800100	●	
16	4	1.0	YJ3800160	●	
19	6	1.3	YJ3810190	●	
20	4	1.0	YJ3800200	●	
22	7	1.3	YJ3800220	●	
24	7	1.3	YJ3800240	●	
25	7	1.3	YJ3800250	●	
26	6.5	1.3	YJ3800260	●	
28	7	1.3	YJ3800280	●	●
28	9	1.5	YJ3810280	●	
30	6	1.3	YJ3810300	●	
30	8	1.5	YJ3800300	●	
32	5	1.0	YJ3820320	●	●
32	7	1.3	YJ3810320	●	
32	9.5	1.5	YJ3800320	●	
35	8	1.5	YJ3800350	●	
37	5	1.0	YJ3810370	●	
37	10	1.8	YJ3800370	●	
40	7	1.3	YJ3800400	●	
42	7	1.3	YJ3810420	●	
42	9.5	1.5	YJ3800420	●	
47	6.5	1.3	YJ3800470	●	●
47	7	1.3	YJ3830470	●	
47	8	1.5	YJ3810470	●	
47	10	1.8	YJ3820470	●	●
50	10	1.8	YJ3800500	●	●
52	6.5	1.3	YJ3800520	●	
52	10	1.8	YJ3810520	●	
55	6	1.3	YJ3820550	●	
55	9	1.5	YJ3800550	●	
55	10	1.8	YJ3810550	●	
60	10	1.8	YJ3800600	●	
62	7	1.3	YJ3820620	●	
62	8	1.5	YJ3800620	●	●
65	10	1.8	YJ3800650	●	
68	8	1.5	YJ3800680	●	
70	10	1.8	YJ3800700	●	
72	9	1.5	YJ3800720	●	●
75	7	1.3	YJ3800750	●	
75	10	1.8	YJ3810750	●	
75	12	2.0	YJ3820750	●	●
80	8	1.5	YJ3800800	●	



Bore	Width	Chamfer	TSS Part No.	TSS	
D H8	B	C		NBR	FKM
80	10	1.8	YJ3820800	●	
80	12	2.0	YJ3830800	●	
85	10	1.8	YJ3810850	●	
85	12	2.0	YJ3800850	●	
90	8	1.5	YJ3800900	●	
90	12	2.0	YJ3810900	●	
95	10	1.8	YJ3800950	●	
100	10	1.8	YJ3811000	●	●
100	12	2.0	YJ3801000	●	●
110	8	1.5	YJ3811100	●	
110	12	2.0	YJ3801100	●	
115	12	2.0	YJ3801150	●	
120	12	2.0	YJ3801200	●	
125	12	2.0	YJ3801250	●	
130	10	1.8	YJ3811300	●	
130	12	2.0	YJ3801300	●	
140	15	2.0	YJ3801400	●	
150	15	2.0	YJ3801500	●	
160	15	2.0	YJ3801600	●	
168	11	1.8	YJ3801680	●	
170	15	2.0	YJ3801700	●	
180	12	2.0	YJ3801800	●	
190	12	2.0	YJ3801900	●	
200	13	2.0	YJ3802000	●	
210	15	2.0	YJ3802100	●	
230	14	2.0	YJ3802300	●	



## ■ Type YJ 39

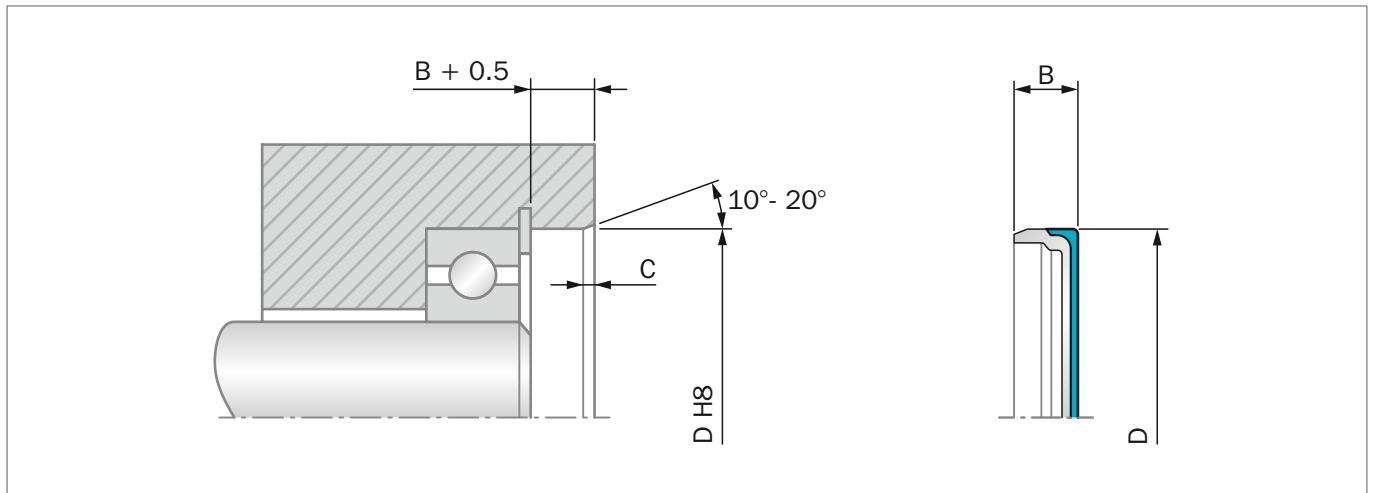


Figure 68: Installation Drawing

### ADVANTAGES

- Good static sealing and stiffness (no pop-out effect)
- Compensation of different thermal expansion
- No risk of fretting corrosion
- Effective protection against air side contaminants
- Higher bore surface roughness is allowed
- Mounting in split-housings
- Good heat transfer

### APPLICATION EXAMPLES

- Transmission systems (e.g. gearboxes)
- Machine tools

### OPERATING CONDITIONS

<b>Pressure:</b>	Up to 0.5 MPa
<b>Temperature:</b>	-40 °C to +200 °C depending on material
<b>Media:</b>	Mineral and synthetic lubricants (CLP, HLP, APGL etc.)

Trelleborg Sealing Solutions has carried out several thousands compatibility tests. Please ask your local Trelleborg Sealing Solutions marketing company for details.

### IMPORTANT NOTE

The above data are maximum values and cannot be used at the same time, e.g. the maximum operating speed depends on material type, pressure and temperature.



**Table 45: Materials**

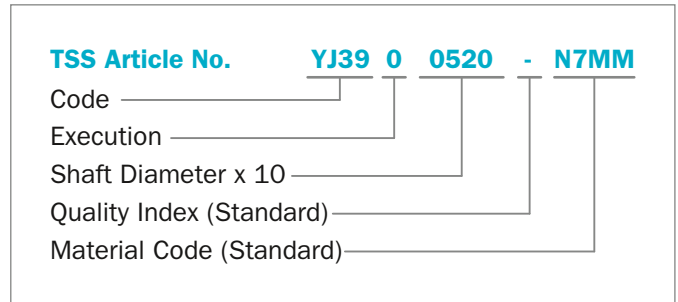
Standard Material*	TSS Material Code	Standard Metal Insert**
NBR (70 Shore A)	N7MM	Carbon steel

\* Special grades and other materials (ACM, EACM, EPDM, HNBR, VMQ) on request.

\*\* Metal insert can also be supplied in different materials on request

**ORDERING EXAMPLE END COVER TSS TYPE**

<b>TSS Type:</b>	YJ
<b>Code:</b>	YJ39
<b>Dimensions:</b>	Housing diameter 52 mm Width 6 mm
<b>Material:</b>	NBR
<b>Material Code:</b>	N7MM



**Table 46: Preferred Series / Dimension, TSS Part Numbers**

Bore	Width	Chamfer	TSS Part No.	TSS
D H8	B	C		NBR
20	5	1.3	YJ3900200	●
22	7	1.3	YJ3900220	●
25	7	1.3	YJ3900250	●
26	7	1.3	YJ3900260	●
28	7	1.3	YJ3900280	●
35	7	1.3	YJ3900350	●
40	7	1.3	YJ3900400	●
42	7	1.3	YJ3900420	●
47	7	1.3	YJ3900470	●
52	6	1.3	YJ3900520	●
62	8	1.5	YJ3900620	●
65	10	1.8	YJ3900650	●
72	9	1.5	YJ3900720	●
75	8	1.5	YJ3900750	●
80	8	1.5	YJ3900800	●
90	10	1.8	YJ3900900	●
100	10	1.8	YJ3901000	●
100	12	2.0	YJ3911000	●
115	12	2.0	YJ3901150	●
140	15	2.0	YJ3901400	●
145	12	2.0	YJ3901450	●
210	15	2.0	YJ3902100	●